

CDOT Configuration ReadMe



Introduction

This Read Me has been divided into the following sections.

New Features –

- Default Project Directory
- Documentation
- Custom Programs
- InRoads Preferences
- Storm & Sanitary
- Survey Preferences
- MicroStation Configuration
- Cell Libraries
- Level Libraries
- Standard Libraries
- Seed Files
- Plotting
- Known Issues

New Features

Version 04.00.00 January 23, 2009

Version 04.00.00 requires that any beta version that had been delivered, be deleted from the computer before installation. Therefore, make sure the following have been removed:

- C:\Workspace
- C:\Program Files\Bentley\Redline\config\system\zCDOTRedline_System.cfg
- C:\Program Files\Bentley\MicroStation\config\systemzzCDOT_1_WhichGroup.cfg
- C:\Program Files\Bentley\MicroStation\config\systemzzCDOT_1_WhichGroup.cfg

This release implements enhancements and fixed problems that have been reported during production on the Bentley XM versions of MicroStation, Redline, and InRoads.

Updates have been made to Documentation for additional workflows, Custom Programs for Menu update/fix, MicroStation Configuration, and plotting.

CDOT Configuration ReadMe.pdf

Default Project Directory

- All dgn's
 - Changed the Author of file properties to CDOT
 - Changed the Company of file properties to Colorado DOT
 - Added new ROW files
- Added tab sheets for groups

Documentation

- New workflow manuals were added and updated
 - Added workflows include:
 - CDOT County Sheet Composer
 - CDOT Level Update for V04.00
 - Updated workflows include:
 - CDOT Alignment Display in Cross Section
 - CDOT Annotating Horizontal and Vertical Alignments
 - CDOT Batch Printing
 - CDOT Calculate Volume
 - CDOT Calculating Quantities With InRoads and Quantity Manager
 - CDOT Creating Combined Surfaces
 - CDOT Displaying Features in Cross Section and Profile
 - CDOT Importing gINT Project Data
 - CDOT InRoads Feature Filters
 - CDOT InRoads Place Note Command
 - CDOT MicroStation Printing
 - CDOT Plan & Profile Generator
 - CDOT Update InRoads Features
 - CDOT Workspace Update
 - CDOT Printer Driver Adjustments
 - Delete Workflows
 - CDOT Level Update for V03.02

Custom Programs

- Added ModElev.ma
- Added CDOTApplications.config.xml to control configuration location for custom programs.
- The CreatePrjDir.exe has been rewritten and renamed for V04. The new name is ProjectCreationUtility.exe.

CDOT Configuration ReadMe.pdf

- Updates and Fixes have been made to the TypicalSection.exe program
- Updated the CDOT Menu for new functionality with XM
- Updated CDOT Menu database with new functionality and requests
- Removed ModZ.ma from the workspace

InRoads Preferences

- Added feature styles for template components
- Move preferences to the XIN file
- Developed new InRoads Template Library, ITL
- Updated XML reports

Survey Preferences

- Moved preferences to the XIN file

MicroStation Configuration

- A custom CDOT interface dgnlib file has been created
- Active Angle by 3 pnts has been added to the Misc. Tool palette
- Workspace Folder
 - Renamed the XM workspace to Workspace-CDOT_XM so a dual platform can be used
- zCDOT_System.cfg
 - Modified variable to point to new workspace folder
- zCDOTRedline_System.cfg
 - Modified variable to point to new workspace folder
- CDOT_2_Standards.cfg
 - Removed old variables that have been disabled or moved to other cfg files
 - Defined new variables for the XM versions
- CDOT_3_Standards_Groups.cfg
 - Added Materials_&_Geotechnical.dgnlib to the level library list
 - Modified variable to point to renamed Bridge seed file
 - Removed Survey_Caps.cel from the Cell Library List variable.
- CDOT_4_Standards_CDOT-Site.cfg
 - Defined new variables for the XM versions
- CDOT_5_Standards_CDOT-Users.cfg
 - Defined new variables for the XM versions
- CDOT User.ucf
 - Rebuilt to certify with XM

CDOT Configuration ReadMe.pdf

- CDOT User.upf
 - Rebuilt to certify with XM
- Added CDOT Help to the MicroStation menu pull downs.

Redline Configuration

- A custom CDOT interface dgnlib file has been created
- CDOT_2R_Standards.cfg
 - Removed old variables that have been disabled
 - Defined new variables for the XM version
- CDOT_4R_Standards_CDOT-Users.cfg has been renamed to CDOT_3R_Standards_CDOT-Users.cfg
 - Removed old variables that have been disabled
 - Defined new variables for the XM version
- CDOT_3R_Standards_CDOT-Projects.cfg has been renamed to CDOT_4R_Standards_CDOT-Projects.cfg+
 - Removed old variables that have been disabled
 - Defined new variables for the XM version

Cell Libraries

- All cell libraries
 - Changed the Author of file properties to CDOT
 - Changed the Company of file properties to Colorado DOT
- Added new cells for ROW
- Added new annotation scale toggle to relevant cell models

Level Libraries

- All dgnlib's
 - Changed the Author of file properties to CDOT
 - Changed the Company of file properties to Colorado DOT
- Bridge
 - Change filters to work around BUG

Standard Libraries

- Text Styles
 - Moved all child styles out to parent level
- Dimension Styles
 - Set new XM settings

CDOT Configuration ReadMe.pdf

Seed Files

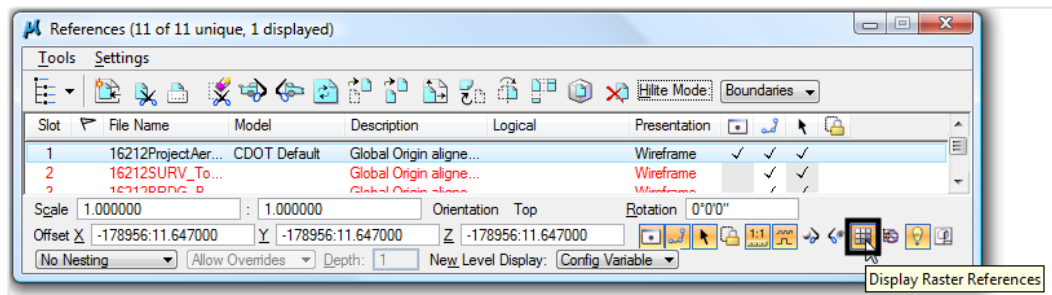
- CDOT Preference Seed.upf
 - Rebuilt to certify with XM
- Bridge-3D-Seed_CDOT.dgn
 - Renamed from 4-Sig-Fig-Seed_CDOT.dgn
 - Change several dgn settings via Bridge meetings
- All Seed dgns
 - Set linestyle scale to read annotation scale
 - Disabled linestyle Scale Factor in Element > Line Styles > Custom
 - Changed the Author of file properties to CDOT
 - Changed the Company of file properties to Colorado DOT

Plotting

- New Plotter Driver files have been created for V04. These pltcfg files replace the plt files from past releases and must be edited using the Print Driver Configuration Editor in MicroStation rather than notepad.
- Updates have been made to all the Pen Tables
- Updated Batch Plotting default values

Known Issues

- Raster display through a dgn reference
 - When turning off the display of a dgn reference that contains a raster image, the raster will not turn off. The fence of the raster will but the full rasters will then appear.
 - To get around this, do not use the reference display toggle. Use the Display Raster Reference toggle.



- Filter Groups
 - Filter groups are not functioning properly and levels will not past the filter.
 - There isn't a work around for this other than figuring out another way to filter the list.
- Batch Process and Converter

CDOT Configuration ReadMe.pdf

- The Function to add a directory or folder to a process is not available.
- The work around is to drill down to the folders and add the dgn's to the list.